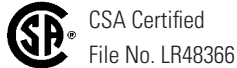


CS Series — Heavy Duty Cam Switches

Key features of the CS Series include:

- Wide variety of heavy-duty oiltight cam switches
- Operators available up to 12 positions
- Switches made with a double circuit contact block
- Contact blocks rated 600V, 10A
- Ideal for ammeter/voltmeter applications
- Built to order — not available in subcomponents
- UL listed and CSA certified
- NEMA 4, 13



A4

Switches & Pilot Devices

Contact Ratings	Rated Thermal Current		10A				
	AC	Break Current	120V/5A	240V/3A	480V/2A	600V/1A	
	DC	Resistive	Break Current	24V/8A	110V/8A	220V/1A	440V/0.45A
		Inductive	Break Current	24V/5A	110V/1.2A	220V/0.45A	440V/0.20A
			Make Current (A)	Rated amperage x 1.1			
	Electrical Life			500,000 operations minimum (at full rated load)			
Mechanical Life			5,000,000 (at no load)				

CS Series

Operator					
Series	Appearance	Cam Angle	Position	Maximum Contacts To Be Mounted	Handle Styles
ACSNO		30°	Up to 12	1 to 10 decks; Up to 20 contacts	YB, SB, PB, FB
		45°	Up to 8		
		60°	Up to 6		
		90°	Up to 4		
		45°	2 or 3		
ACSNK		30°	Up to 12	1 to 10 decks; Up to 20 contacts	HB or standard key
		45°	Up to 8		
		60°	Up to 6		
		90°	Up to 4		
		45°	2 or 3		
UCSQO		30°	Up to 12	1 to 10 decks; Up to 20 contacts	YB, SB, PB, FB
		45°	Up to 8		
		60°	Up to 6		
		90°	Up to 4		
		45°	2 or 3		
UCSQM		45° Spring return	Only 3	1 to 3 decks; Up to 6 contacts	YB, SB, PB, FB



1. It is recommended to use spring return (SR) for a maximum of six contacts.
2. Two identical keys come with ACSNK unit. Specify "H" for handle key option.
3. For handle styles, see page A4-200.

CS Series – Heavy Duty Cam Switches

A4

Switches & Pilot Devices



Assembled Oiltight Cam Switches
ACSNO – 3 6 6 – () S B – C3013

Series

- ACSNO = Standard Cam Switch (30mm)
- ACSNK = Key Cam Switch (30mm)
- UCSQO = Cam Switch (5 hole mounting)
- UCSQM = 3 Position Spring Return Cam Switch (5 hole mounting)

Number of Levels (Decks)

1 through 10
Note: One level contains two independent contacts.*

Number of Positions

2 through 12

Angle

- 3 = 30° (12 position max)
- 4 = 45° (8 position max)
- 6 = 60° (6 position max)
- 9 = 90° (4 position max)

Contact Arrangement

1. For standard contact arrangements, use designations on pages A4-197 and A4-198.
2. For custom contact arrangements, omit contact arrangement designation and complete the blank order form on the next page.

Handle

- YB** = Knob, Small
- SB** = Lever, Small
- PB** = Lever, Large
- FB** = Knob, Large
- HB** = Handle Key (ACSNK only)
- Blank** = Standard Key (ACSNK only)

Spring Return Action

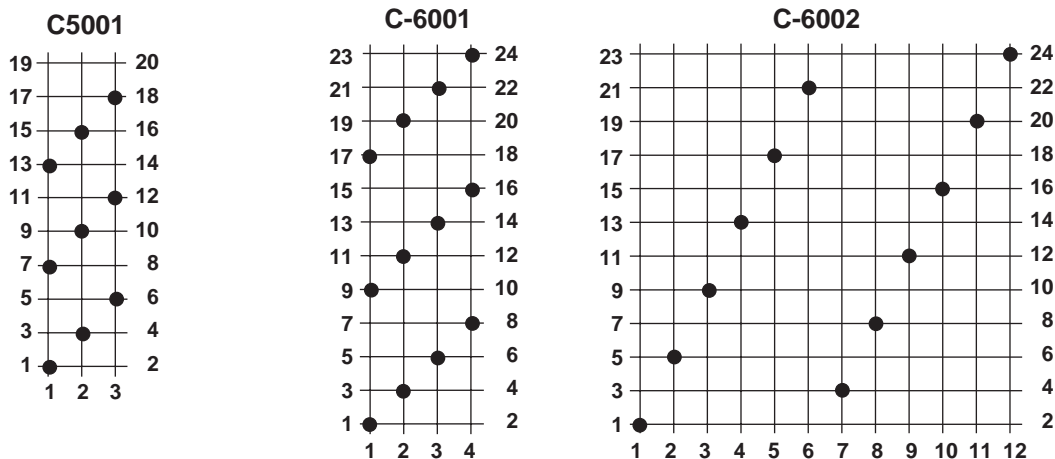
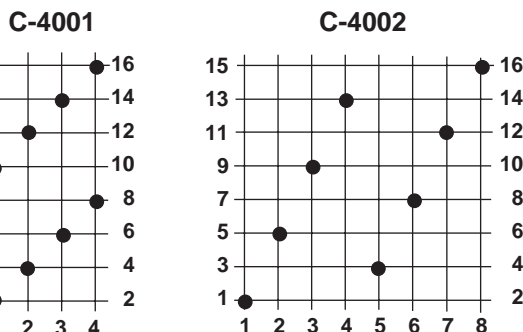
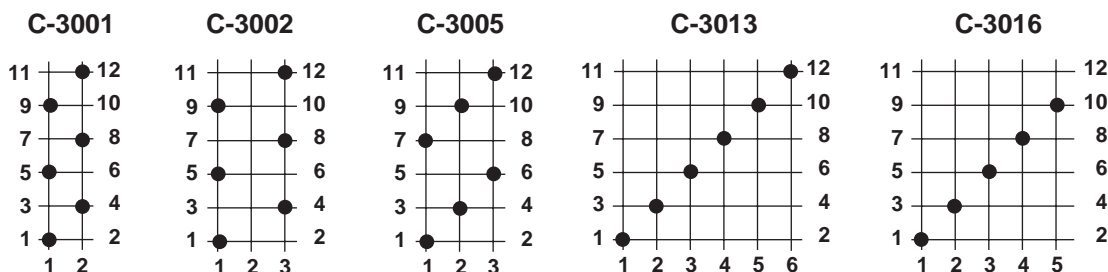
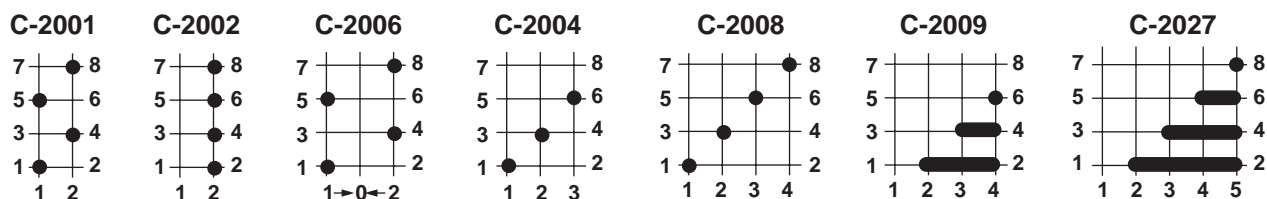
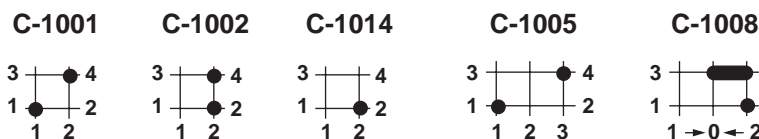
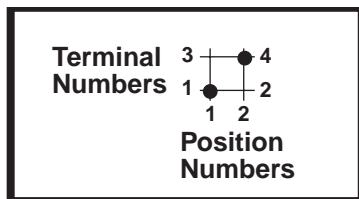
- Blank: Maintained
- RO** = Spring return from left (2, 3 or 4 position, 45° only)
- OR** = Spring return from right (2, 3 or 4 position, 45° only)
- RR** = Return from right and left (3 pos, 45° only)



1. *Contact blocks may contain two independent contacts, (a four position switch with four independent contacts only requires two contact blocks).
2. *Caution: switches with 180° or more of rotation may require separate blocks for each contact due to cam overlapping. Contact IDEC for details.
4. Key removable in every 45° position (45, 90, 180, 225, 270, 315, 360).

Contact Arrangements

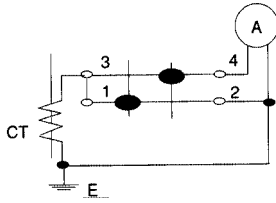
Standard Arrangements



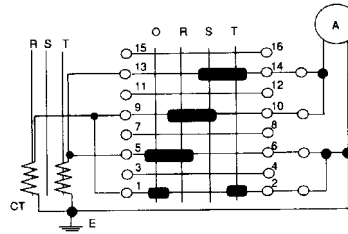
Contact Arrangements con't

Ammeter Switching

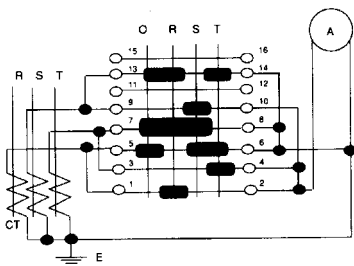
C-1012



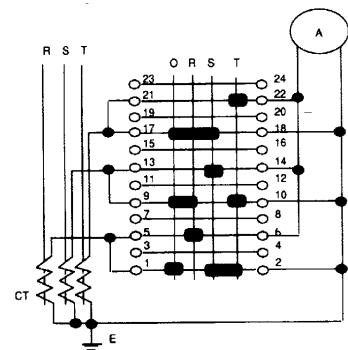
C-4007



C-4003

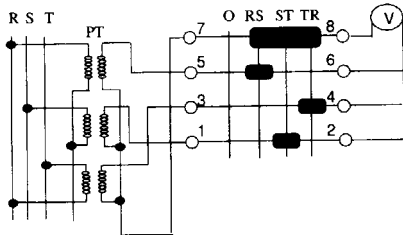


C-6003

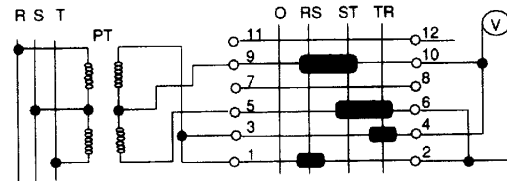


Voltmeter Switching

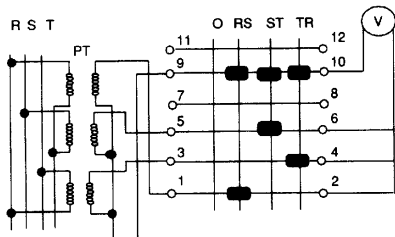
C-2022



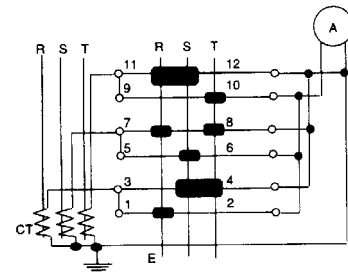
C-3008



C-3009

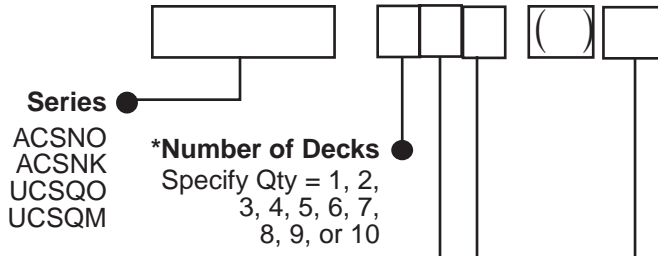


C-3007



A4
Switches & Pilot Devices

Order Form (Custom Contact Arrangement)



Series
 ACSNO
 ACSNK
 UCSQO
 UCSQM

***Number of Decks**
 Specify Qty = 1, 2,
 3, 4, 5, 6, 7,
 8, 9, or 10

*** Note:** One Deck can drive two independent contacts.

Number of Positions

Unit	Angle	Positions
ACSNO	30° only	9, 10, 11, 12
	30° or 45° only	7 or 8
ACSNK*	30°, 45° or 60°	5 or 6
UCSQO	30°, 45°, 60°, 90°	2, 3, or 4
	45° only	3 only
	45° only	3 only

* ACSNK keys only remove at 45°.



Spring Return

Blank = Maintained
 RO = Spring return from left (3 or 4 position, 45° only)
 OR = Spring return from right (3 or 4 position, 45° only)
 RR = Return from right and left (3 position, 45° only)

UCSQM is available in spring-return version only.

ACSNO, UCSQO, UCSQM:

YB = Knob, Small
 SB = Lever, Small
 PB = Lever, Large
 FB = Knob, Large

ACSNK:

HB = Handle Key (option)
 Blank = Standard Key



For handle styles, see page A4-200.

Contact Arrangement Table

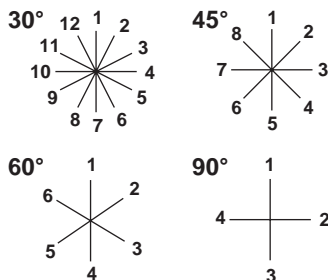
Cams	Terminal No.	Position											
		1	2	3	4	5	6	7	8	9	10	11	12
Deck 1	1 and 2												
	3 and 4												
Deck 2	5 and 6												
	7 and 8												
Deck 3	9 and 10												
	11 and 12												
Deck 4	13 and 14												
	15 and 16												
Deck 5	17 and 18												
	19 and 20												
Deck 6	21 and 22												
	23 and 24												
Deck 7	25 and 26												
	27 and 28												
Deck 8	29 and 30												
	31 and 32												
Deck 9	33 and 34												
	35 and 36												
Deck 10	37 and 38												
	39 and 40												



To specify non-standard arrangements (designation not on preceding pages), fill in this table using the following symbols.

X = Closed contact (break before make) O = Open contact ~~X~~ = Overlapping contact (remain on when switch is moved between two positions)

Specifying Nameplate (Optional)



Specifying Legends

Position

1 _____
 2 _____
 3 _____
 4 _____
 5 _____
 6 _____



If no engraving information is provided, a blank nameplate will be supplied.

7 _____
 8 _____
 9 _____
 10 _____
 11 _____
 12 _____

Accessories — CS Series




Replacement Handles


A4

Switches & Pilot Devices



					
Part Number	CSH-YB	CSH-SB	CSH-PB	CSH-FB	CSH-H2B
Dimensions	0.79"D x 1.61"H	0.79"D x 1.97"H	1.58"D x 1.97"H	1.58"D x Ø 1.97"	0.95"D x 2.28"H
Applicable Models	ACSNO, UCSQO, UCSQM				ACSNK

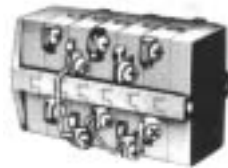
Replacement Nameplates

Size & Shape □ 2.52" (64mm) Black Aluminum			
Part Number	CQ	CQM	CQN
Applicable Models	UCSQO	UCSQM	ACSNO, ACSNK


-  1. Extra cost for engraving, 3/16" min. letter height. For legends with more than ten characters, consult IDEC.
2. Blank nameplates are supplied with all cam switches (they need not be ordered separately).

Wiring Clips

Part Number	Contact Block Jumpers
CJ-1 	Between cams
CJ-2 	Same cam



Replacement Keys

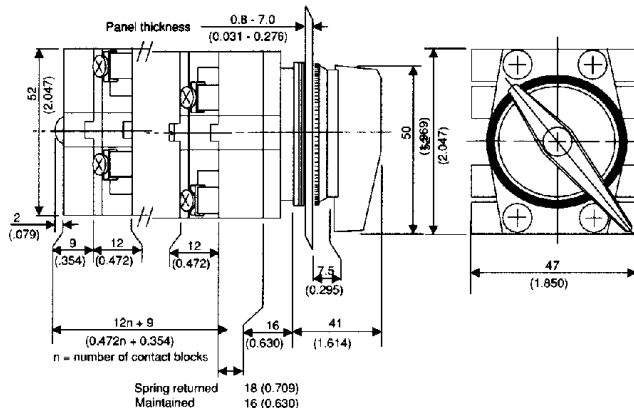
Part Number	
K301 	Pair of keys (#301)

Dimensions/Terminal Arrangements/Mounting Holes

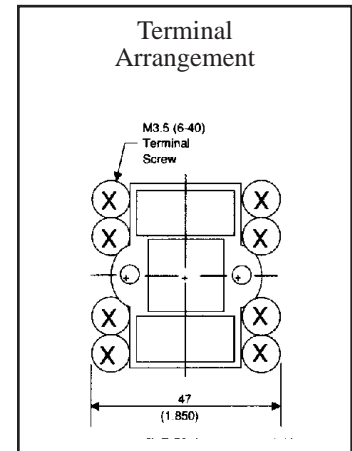
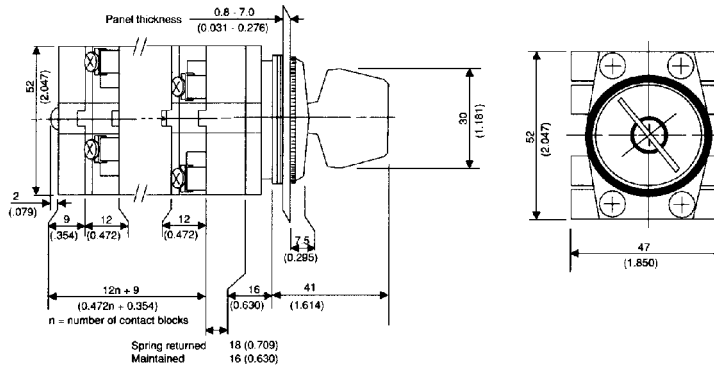
A4

Switches & Pilot Devices

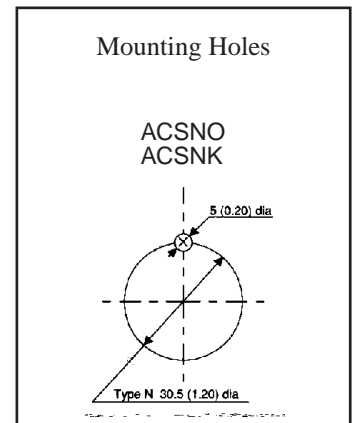
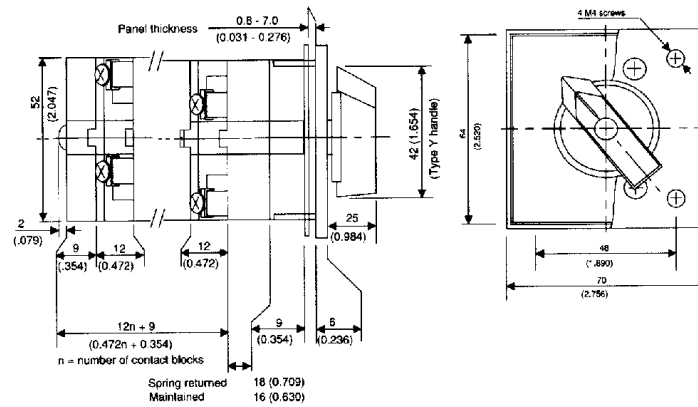
ACSNO



ACS NK



UCSQO



UCSQM

