

**HS1C Series Full Size Interlock Switch with Locking Solenoid**

**HS1C**

**Key features include:**

- Rugged Aluminum Die-cast Housing
- With the actuator mounted on a movable door, and the switch on a machine, the door can be mechanically locked when closed.
- Greater Safety: The door is unlocked by a solenoid lock-release signal from a PLC or another source after the machine has stopped.
- In the event of power failure or for machine maintenance, the door can be unlocked using a special tool.
- Flexible Installation: The actuator can be accessed from two directions.
- Select from four different circuit configurations.
- IP67 Protection



Safety Products

B1



GS-ET-15  
BG standard in Germany

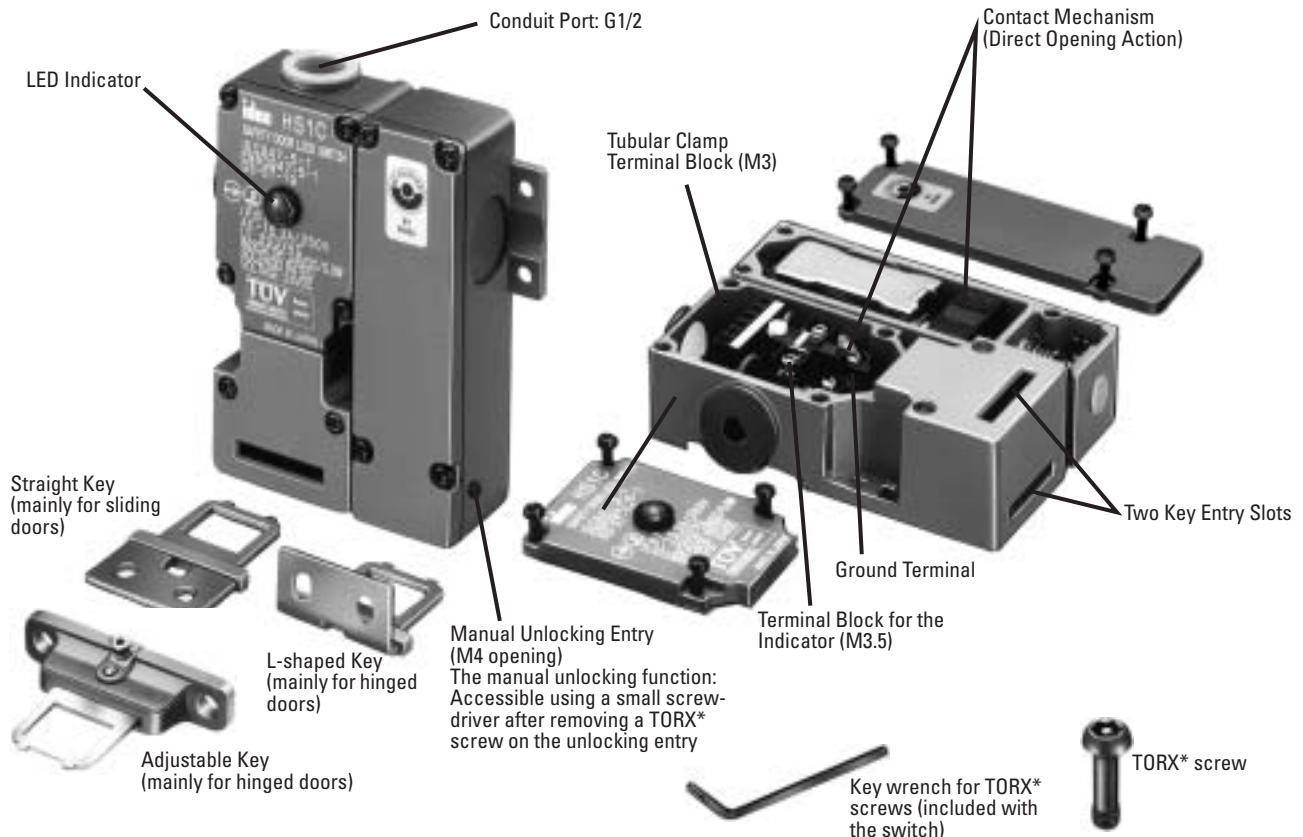


Certificate No.  
2005010305145652



Direct Opening Action

**HS1C Series Functionality**



**Manual Unlocking Entry (M4 opening)**  
The manual unlocking function: Accessible using a small screwdriver after removing a TORX\* screw on the unlocking entry

Key wrench for TORX\* screws (included with the switch)

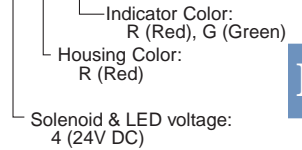
\*TORX is a registered trademark of Camcar Textron.

## Specifications

|  |   |                                 |  |            |           |          |
|--|---|---------------------------------|--|------------|-----------|----------|
| <b>Conforming to Standards</b>   | EN1088, IEC60947-5-1, EN60947-5-1<br>GS-ET-19   |                                 |  |            |           |          |
| <b>Operating Temperature</b>   | -20 to +40°C (no freezing)  |                                 |  |            |           |          |
| <b>Storage Temperature</b>   | -40 to +80°C  |                                 |  |            |           |          |
| <b>Operating Humidity</b>  | 85% RH maximum (no condensation)  |                                 |  |            |           |          |
| <b>Altitude</b>  | 2,000m maximum  |                                 |  |            |           |          |
| <b>Rated Insulation Voltage (Ui)</b>   | 300V (between LED or solenoid and ground: 60V)  |                                 |  |            |           |          |
| <b>Impulse Withstand Voltage (Uimp)</b>  | 4 kV (between LED or solenoid and ground: 2.5 kV)   |                                 |  |            |           |          |
| <b>Insulation Resistance</b>   | Between live and dead metal parts: 100 MΩ minimum<br>Between live metal part and ground: 100 MΩ minimum<br>Between live metal parts: 100 MΩ minimum<br>Between terminals of the same pole: 100 MΩ minimum |                                 |  |            |           |          |
| <b>Electric Shock Protection Class</b>   | Class 1 (IEC61140)  |                                 |  |            |           |          |
| <b>Pollution Degree</b>  | 3 (IEC60947-5-1)  |                                 |  |            |           |          |
| <b>Degree of Protection</b>  | IP67 (IEC60529)   |                                 |  |            |           |          |
| <b>Vibration Resistance</b>  | <b>Operating Extremes</b>   | 10 to 55 Hz, amplitude 0.5 mm   |  |            |           |          |
|  | <b>Damage Limits</b>  | 60 m/s <sup>2</sup> (approx.6G) |  |            |           |          |
| <b>Shock Resistance</b>  | 1,000 m/s <sup>2</sup> (approx. 100G)   |                                 |  |            |           |          |
| <b>Key Tensile Strength when Locked</b>  | 1,500N minimum  |                                 |  |            |           |          |
| <b>Operating Speed</b>   | 1 m/sec maximum   |                                 |  |            |           |          |
| <b>Positive Opening Travel</b>   | 11 mm minimum   |                                 |  |            |           |          |
| <b>Positive Opening Force</b>  | 20N minimum   |                                 |  |            |           |          |
| <b>Thermal Current (Ith)</b>   | Main circuit: 10A, Auxiliary circuit: 3A  |                                 |  |            |           |          |
| <b>Rated Operating Current (Ie)</b>  | Rated operating voltage (Ue)  |                                 | 30V  | 125V       | 250V      |          |
|  | Main Circuit  | AC                              | Resistive load (AC12)<br>Inductive load (AC15) | 10A<br>10A | 10A<br>5A | 6A<br>3A |
|  |   | DC                              | Resistive load (DC12)<br>Inductive load (DC13) | 6A<br>3A   | -<br>0.9A | -<br>-   |
|  | Auxiliary Circuit   | AC                              | Resistive load (AC12)<br>Inductive load (AC15) | -<br>-     | 3A<br>-   | 3A<br>3A |
|  |   | DC                              | Resistive load (DC12)<br>Inductive load (DC13) | 3A<br>-    | -<br>0.9A | -<br>-   |
|  | <b>Contact Opening Distance</b> Main circuit: 1.7 mm max., Auxiliary circuit: 1.2 mm min.   |                                 |  |            |           |          |
| <b>Operating Frequency</b> 900 operations/hour   |   |                                 |  |            |           |          |
| <b>Mechanical Life</b> 1,000,000 operations  |   |                                 |  |            |           |          |
| <b>Electrical Life</b> 100,000 operations (rated load)   |   |                                 |  |            |           |          |
| <b>Conditional Short-circuit Current</b> 100A (IEC60947-5-1)                                       |   |                                 |  |            |           |          |
| <b>Recommended Short Circuit Protection</b> 250V, 10A fuse (Type D01 based on IEC60269-1, 60269-2) |   |                                 |  |            |           |          |
| <b>Solenoid Unit</b>   | <b>Rated Operating Voltage</b>  |                                 | 24V DC   |            |           |          |
|  | <b>Rated Current</b>  |                                 | 415 mA   |            |           |          |
|  | <b>Coil Resistance</b>  |                                 | 58Ω (at 20°C)                                  |            |           |          |
|  | <b>Energizing Voltage</b>   |                                 | Rated voltage × 85% maximum (at 20°C)          |            |           |          |
|  | <b>De-energizing Voltage</b>  |                                 | Rated voltage × 10% minimum (at 20°C)          |            |           |          |
|  | <b>Continuous Applicable Voltage</b>  |                                 | Rated voltage × 110%                           |            |           |          |
|  | <b>Continuous Applicable Duration</b>   |                                 | Not specifically limited                       |            |           |          |
|  | <b>Insulation Class</b>   |                                 | Class B  |            |           |          |
| <b>Indicator</b>   | <b>Rated Operating Voltage</b>  |                                 | 24V DC   |            |           |          |
|  | <b>Rated Current</b>  |                                 | 10 mA  |            |           |          |
|  | <b>Light Source</b>   |                                 | LED lamp                                       |            |           |          |
|  | <b>Lens Color</b>   |                                 | Red or Green (12 mm dia. Lens)                 |            |           |          |
|  | <b>Weight</b>   |                                 | 660g   |            |           |          |

## Ordering Information

HS1C - R 1 4 4 R - R



Circuit Diagram No.

|        |              |                   |
|--------|--------------|-------------------|
|        | Main Circuit | Auxiliary Circuit |
| Blank: | 1NC+1NC      | 1NO/1NO           |
| 1:     | 1NC+1NC      | 1NO               |
| 2:     | 1NC+1NC      | 1NC+1NC           |
| 3:     | 1NC+1NC      | 1NC               |


B1

Safety Products

Specifications

Part Numbers

Part Numbers: Body

| Item  | Part Number  | Description                           | Solenoid Unit                          |
|---|--------------|---------------------------------------|--|
|  | HS1C-R④44R-* | HS1C with solenoid interlock (24V DC) | Attached on the right side of the base |

Part Numbers: Keys, Wrench & Screwdriver

| Item   | Part Number | Description                               |
|--|-------------|---|
|  | HS9Z-A1     | Straight Key (Mainly for sliding doors)   |
|  | HS9Z-A2     | L-shaped Key (Mainly for rotating doors)  |
|  | HS9Z-A3     | Adjustable Key                            |
|  | HS9Z-T1     | Special Key Wrench (included with switch) |

B1

Safety Products

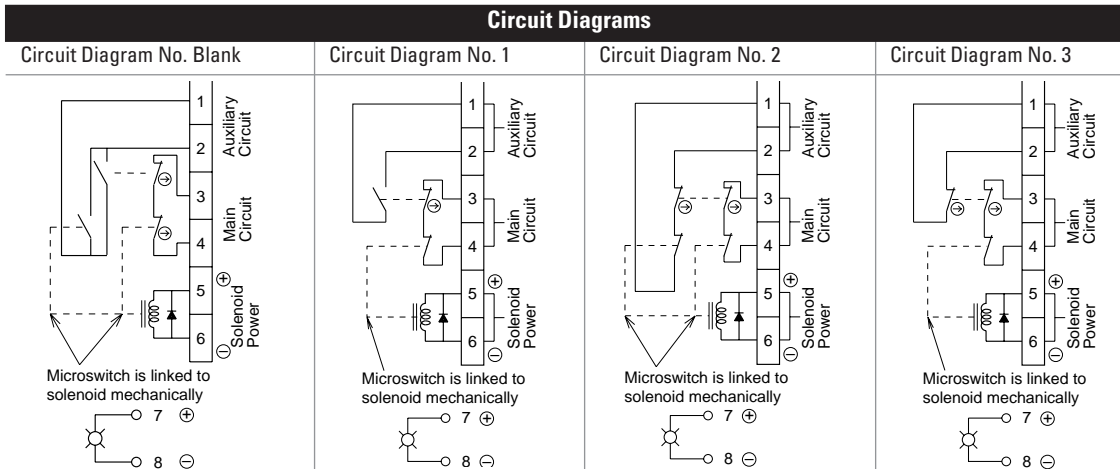


1. Special key wrench (HS9Z-T1) for removing the cover and manual unlocking is included with the switch.
2. Specify the circuit diagram No. in place of ④.
3. Specify the indicator color (R or G) in place of \*.
4. Order the key separately (not included with the switch).

Circuit Diagram No.

|        | Main Circuit | Auxiliary Circuit |
|--------|--------------|-------------------|
| Blank: | 1NC+1NC      | 1NO/1NO           |
| 1:     | 1NC+1NC      | 1NO               |
| 2:     | 1NC+1NC      | 1NC+1NC           |
| 3:     | 1NC+1NC      | 1NC               |

Circuit Diagrams



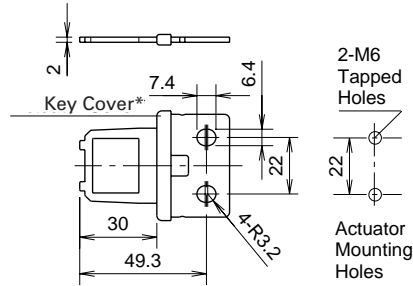


Accessories

**Straight Key (mainly for sliding doors)**  
HS9Z-A1



weight: 22g



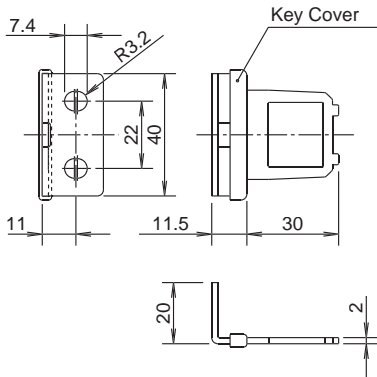
2-M6 Tapped Holes  
22  
Actuator Mounting Holes

B1  
Safety Products

**L-Shaped Key (mainly for hinged doors)**  
HS9Z-A2



weight: 22g

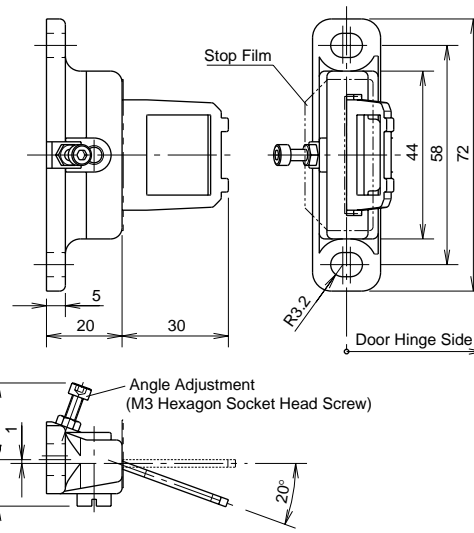


\*After installing the key, remove the key cover.

**Adjustable Key**

- The key angle is adjustable (0° to 20°) for hinged doors.
- The minimum radius of the door opening can be as small as 100mm.

For HS1/HS2 Series (HS9Z-A3)



All dimensions in mm.

## Interlock Switch Safety Precautions

- In order to avoid electric shock or a fire, turn the power off before installation, removal, wire connection, maintenance, or inspection of the switch.
- If relays are used in the circuit between the safety switch and the load, consider degrees of the danger and use safety relays, since welded or sticking contacts of standard relays may invalidate the functions of the safety switch.
- Do not place a PLC in the circuit between the safety switch and the load. The safety security can be endangered in the event of a malfunction of the PLC.
- Do not disassemble or modify the switch. It may cause a breakdown or an accident.

## Operation Precautions - for all series

- Regardless of door types, do not use the safety switch as a door stop. Install a mechanical door stop at the end of the door to protect the safety switch against excessive force.
- Do not apply an excessive shock to the switch when opening or closing the door.
- A shock to the door exceeding 1,000 m/sec<sup>2</sup> (approx. 100G) may cause the contacts of the switch to chatter, and a malfunction of the switch may occur.
- For connection of wires, unscrew the cover. Unnecessary loosening of other screws may cause a malfunction of the switch.
- Prevent foreign objects such as dust and liquids from entering the switch while connecting a conduit or wiring.
- If the operating atmosphere is contaminated, use a protective cover to prevent the entry of foreign objects into the switch through the actuator entry slots.
- Entry of a considerable amount of foreign objects into the switch may affect the mechanism of the switch and cause a breakdown.
- Do not store the switches in a dusty, humid, or organic-gas atmosphere.

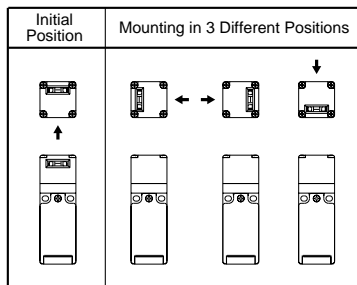
B1

Safety Products

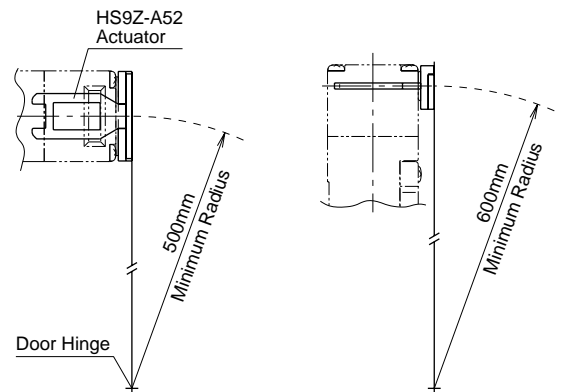
## HS5B Precautions

### For Rotating Head Directions

- The head of the HS5B can be rotated in 90° increments after removing the 4 screws on the corners of the head. Prevent entry of foreign objects into the switch during removal of the head. Tighten these screws with torque designated in the instruction sheet. Improper torque may cause errors.



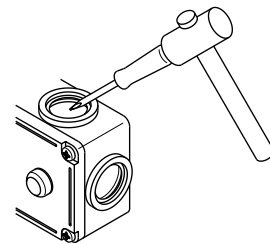
### Minimum Radius of Hinged Doors



## HS2B Precautions

### Wire Connection

- The HS2B has 3 conduit ports, which are closed as a part of the molded switch housing.
- Make an opening for wire connection by breaking one of the conduit-port knockouts on the switch housing using a screwdriver.
- When breaking the conduit port, take care not to damage the contact block or other parts inside the switch.
- Cracks or burrs on the conduit entry may deteriorate the housing protection against water.
- When changing to another conduit port, close the unused opening with an optional plug (Type No. HS9Z-P1).

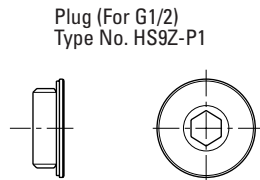
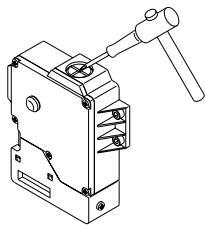


**HS1E Precautions**

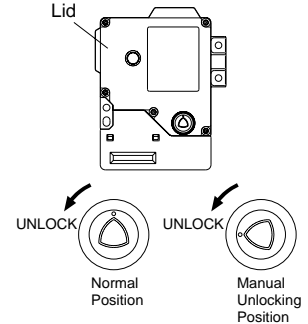
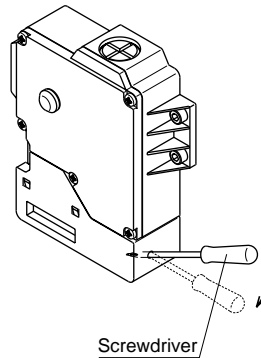
**Wire Connection**

- Make an opening for wire connection by breaking one of the conduit-port knockouts on the switch housing using a screwdriver.
- Before breaking the knockout, temporarily remove the connector-fixing lock nut from the switch.
- When breaking the knockout, take care not to damage the contact block or other parts inside the switch.
- Cracks or burrs on the conduit entry may deteriorate the housing protection.
- When changing to the other conduit port, close the unused opening with an optional plug (accessory).

**B1**  
**Safety Products**

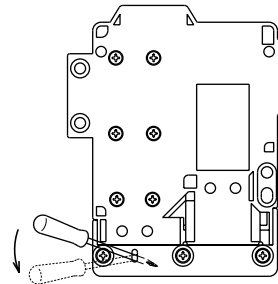


1. This unlocking method is intended for an escape from a machine when a person is locked in. For access to the unlocking entry, an access hole should be opened on the mounting panel. When opening the hole, apply proper protection against water or other foreign objects.
2. Caution: After the unlocking operation, put the screw back into the unlocking entry for safety.



**Manual Unlocking**

- Remove the screw located on the unlocking entry at the side of the switch using the key wrench included with the switch. Then insert a small screwdriver into the switch to push the lever inside of the switch toward the indicator until the actuator is unlocked (refer to the diagram on the right).
- Insert a small screwdriver into the elliptical hole on the back of the switch, then push the lever inside of the switch toward the indicator until the key is unlocked (refer to the diagram on the right).

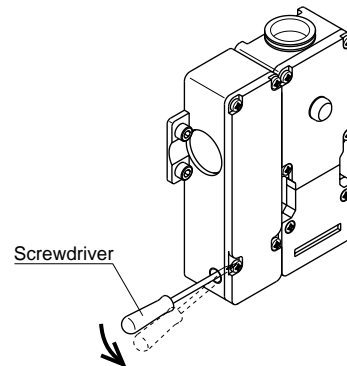


**HS1C Precautions**

- Regardless of door type, do not use the safety switch as a locking device. Install a locking device independently, for example, using a metal latch (also applicable to Type HS1E).
- The safety switch cover can be only removed with the special key wrench supplied with the switch or with the optional screwdriver (applicable to HS1B and HS1E).
- Remove the screw located on the unlocking entry at the side of the switch using the key wrench included with the switch. Then insert a small screwdriver into the switch to push the lever inside of the switch toward the indicator until the actuator is unlocked (refer to the diagram on the right).



Caution: After the unlocking operation, put the screw back into the unlocking entry for safety.

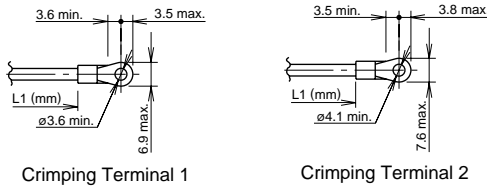




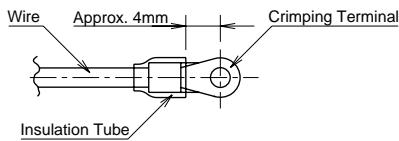
## Operation Precautions

### Applicable Crimping Terminals

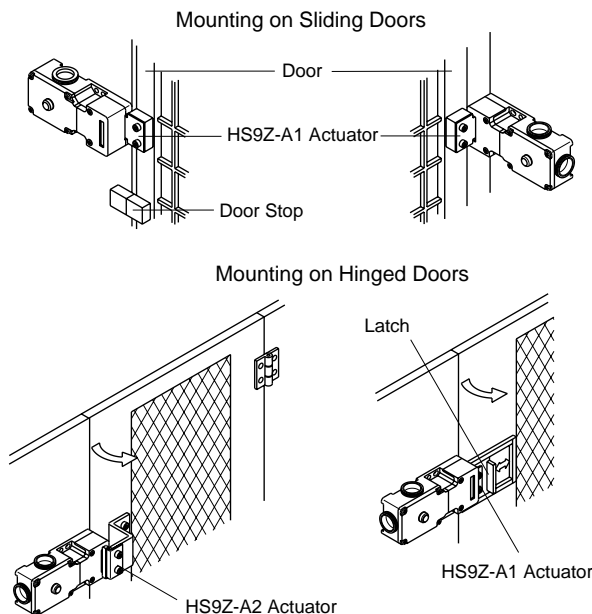
- (Refer to the Crimping Terminal 1 or 2 shown in the drawing below.)
- HS1C  
Terminals No. 1 to 6: Use solid or stranded wires only (crimping terminals not applicable).  
Terminals No. 7 and 8: Crimping Terminal 1  
Ground Terminal: Crimping Terminal 2
- HS1B  
Ground Terminal: Crimping Terminal 2  
Other Terminals: Crimping Terminal 1  
HS2B, HS5B, and HS1E  
Crimping Terminal 1



Use an insulation tube on the crimping terminal.

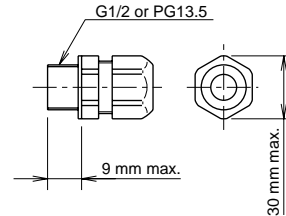


### Installation Examples (see the diagrams below)



### Applicable Connectors (As shown below)

- Use connectors which maintain the IP67 protection.
- Applicable Connector Dimensions
- Flex Conduit: VF03 (Japan Flex) [www.nipolex.co.jp](http://www.nipolex.co.jp)
- Steel Connector (G1/2): ALC-103  
(PF13.5): RBC-103PG13.5



### Recommended Screw Tightening Torque

- HS1C: 5.0±0.5 N-m (approx. 50±5 kgf-cm)  
(4 or 6 pcs of M5 hex socket head cap screws)
- HS1B: 5.0±0.5 N-m (approx. 50±5 kgf-cm)  
(2 or 4 pcs. of M5 hex socket head cap screws)
- HS2B: 5.0±0.5 N-m (approx. 50±5 kgf-cm)  
(2 pcs of M5 hex socket head cap screws)
- HS5B: 4.0±0.4 N-m (approx. 40±4 kgf-cm)  
(2 pcs of M4 hex socket head cap screws)
- HS1E: 5.0±0.5 N-m (approx. 50±5 kgf-cm)  
(4 or 6 pcs of M5 hex socket head cap screws)
- Key (HS9Z-A1/A2)  
5.0±0.5 N-m (approx. 50±5 kgf-cm)
- (2 pcs. of M6 hex socket head cap screws)  
Key (HS9Z-A51/A52)
- 2.0±0.2 N-m (approx. 20±2 kgf-cm)  
(2 pcs of M4 hex socket head cap screws)
- 1.0±0.2 N-m (approx. 10±2 kgf-cm)  
(2 pcs of M4 Phillips screws)



The screws are supplied by the user.

### Applicable Wire Size

- HS1C: 0.5 to 0.75 mm<sup>2</sup> (Terminals No.1, 2, 5 to 8)  
1.0 to 1.25 mm<sup>2</sup> (Terminals No.3, 4, and grounding terminal)
- HS5B: 0.5 to 1.25 mm<sup>2</sup>
- HS1E: 0.5 to 1.25 mm<sup>2</sup>