

COMPACT POWER RELAY

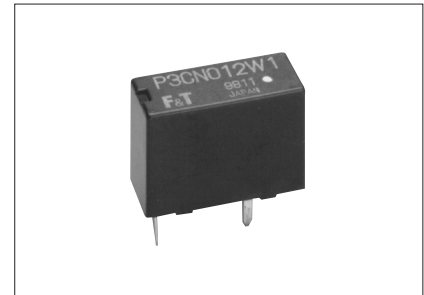
1 POLE—25 A FOR AUTOMOTIVE APPLICATIONS

FTR-P3 Series

RoHS compliant

■ FEATURES

- Compact for high density packaging.
(65% volume of previous generation FBR 51/52 Series).
- High contact capacity with proven contact material.
(100,000 operations, 14 V, 25 A achieved, even with reduced size).
- 125°C version is available.
- Surface mount compatible version (reflowable) is available.
- Coil power savings
(600mW nominal achieved with state-of-the-art magnetic analysis/design).
- Ease of PCB layout
(all terminals on perimeter, coil and contact terminals separated).
- Optional over-voltage circuit breaking capability
(0.6mm gap, contact our representative).
- Packaging for auto-insertion (tube packing, 30 relays/tube).
- RoHS compliant since date code: 0630
Please see page 8 for more information



■ ORDERING INFORMATION

_____ FTR-P3 C N 012 W1 ***
 [Example] (a) (b) (c) (d) (e) (f)

(a)	Series Name	FTR-P3 Series
(b)	Contact Arrangement	C : 1 Form C
(c)	Contact Gap	N : 0.3mm gap P : 0.6mm gap
(d)	Nominal Coil Voltage	009 : 09VDC 010 : 10VDC 012 : 12VDC
(e)	Contact Material	W1 : Silver-tin oxide-indium
(f)	Custom Designation	Nil : Standard (85°C) -01 : High temperature (125°C) -05 : High temperature (125°C) and reflowable

Note: The part number stamped on the relay cover does not include "FTR".
 Example: Ordering part number: FTR-P3CN012W1
 Stamped on part number: P3CN012W1

■ TYPICAL APPLICATIONS

Power window Door lock Sun roof	Power seat Wiper/IWW	Tilt steering Retractable antenna
---------------------------------------	-------------------------	--------------------------------------

FTR-P3 SERIES

■ SPECIFICATIONS

Item		Specification		
		Standard	High temperature version (-01, -05)	
Contact	Arrangement	1 form C (SPDT)		
	Material	Silver-tin oxide-indium		
	Contact path Voltage Drop (Initial)	Maximum 100 mV (at 2 A 12 VDC)		
	Rating	25 A at 14VDC (locked motor load)		
	Maximum Carry Current	25 A / 1hour (25° C, 100% rated coil voltage)		
	Maximum Inrush Current (Reference)	35 A		
	Maximum Switching Current (Reference)	35 A at 16 VDC		
	Minimum Switching Load*1 (Reference)	1 A, 6 VDC		
Coil	Operating Ambient Temperature Range	-40° C to +85° C (no frost)	-40° C to +125° C (no frost)	
	Storage Temperature Range	-40° C to +100° C (no frost)	-40° C to +125° C (no frost)	
Timing Values	Operate (at nominal voltage)	Maximum 10ms (not including bounce)		
	Release (at nominal voltage)	Maximum 5ms (not including bounce, no diode) Maximum 15ms (not including bounce, with diode)		
Life	Mechanical	10 x 10 ⁶ operations minimum		
	Electrical	100 x 10 ³ operations minimum, 14 VDC, 25 A (locked motor load) (1 operation = 1 forward and 1 reverse)		
Other	Vibration Resistance	Operational	10-55Hz, 1.5mm double amplitude (=9.13G @ 55Hz)	
		Shock Resistance	Operational	100 m/s ² minimum (10G)
		Withstand, no damage	1,000 m/s ² minimum (100G)	
	Insulation Resistance (initial)		100M ohms @500 VAC	
	Dielectric Withstanding Voltage (initial)		500 VAC	
	Weight		Approximately 5g	

*1 Values when switching a resistive load at normal room temperature and humidity and in a clean environment. The minimum switching load varies with the switching frequency and operating environment.

FTR-P3 SERIES

■ COIL DATA CHART

FTR-P3 Series

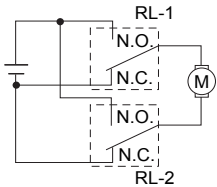
Model	Nominal Coil Voltage	Coil Resistance ($\pm 10\%$ at 20°C)	Must Operate Voltage	Must Release Voltage (at 20°C)	Coil Power at Nominal Voltage	Thermal Resistance (approx.)
FTR-P3CN009W1 ()	9VDC	135 Ω	5.5VDC (at 20° C) 6.9VDC (at 85° C)	0.75VDC	0.6W	73° C/W
FTR-P3CN010W1 ()	10VDC	167 Ω	6.3VDC (at 20° C) 7.9VDC (at 85° C)	0.9VDC	0.6W	73° C/W
FTR-P3CN012W1 ()	12VDC	240 Ω	7.3VDC (at 20° C) 9.2VDC (at 85° C)	1.0VDC	0.6W	73° C/W

Note: () is "Nil", "-01", or "-05"

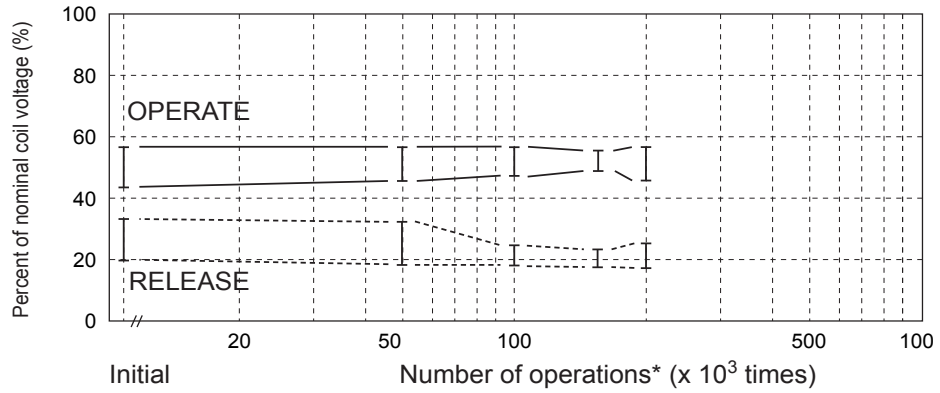
CHARACTERISTIC DATA

1. LIFE TEST (EXAMPLES)

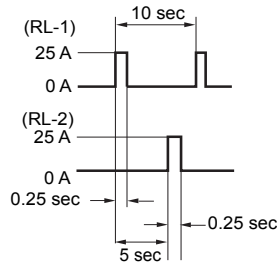
- Test item
14 V DC-25 A
locked motor
100K operations* minimum
0.25 seconds ON,
9.75 seconds OFF



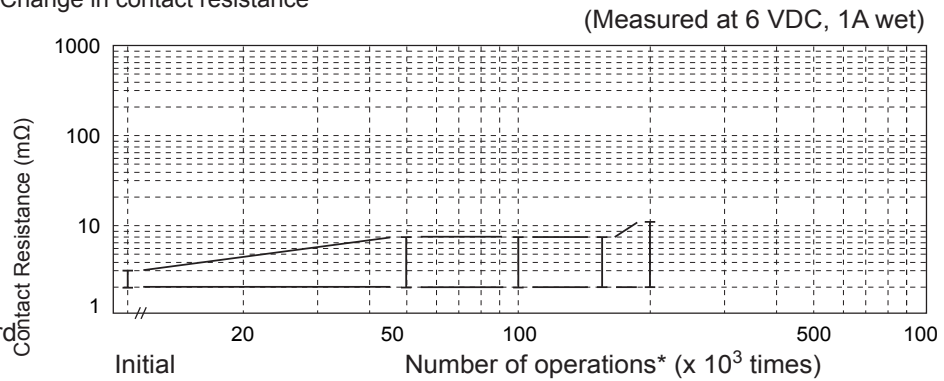
- Change of operate and release voltage



- Current wave form

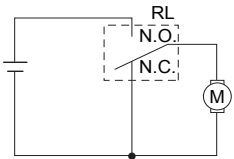


- Change in contact resistance

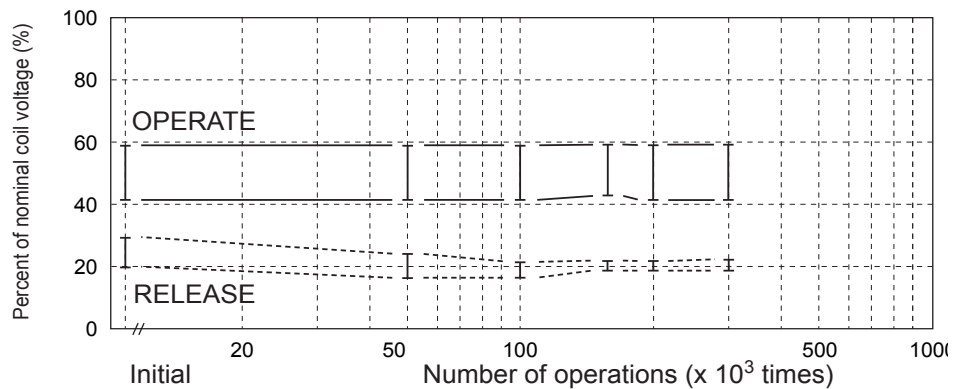


* 1 operation = 1 forward and 1 reverse

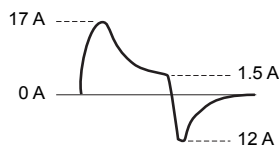
- Test item
14 V DC,
inrush current: 17A
motor free
300K operations minimum
0.25 seconds ON,
9.75 seconds OFF



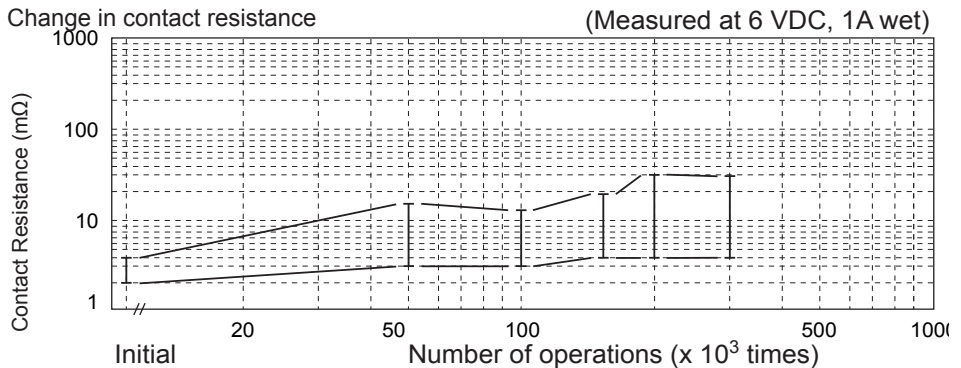
- Change of operate and release voltage



- Current wave form

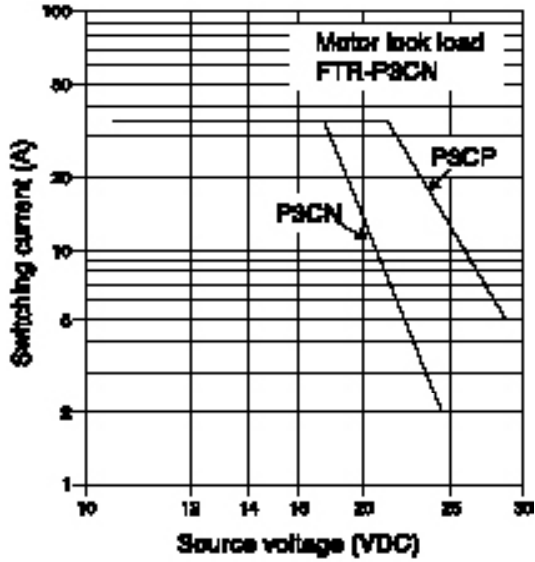


- Change in contact resistance

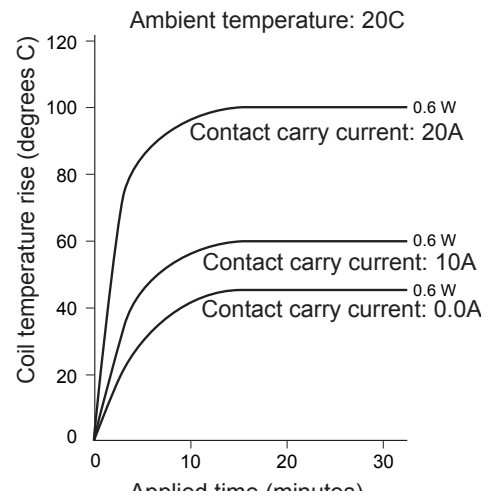


FTR-P3 SERIES

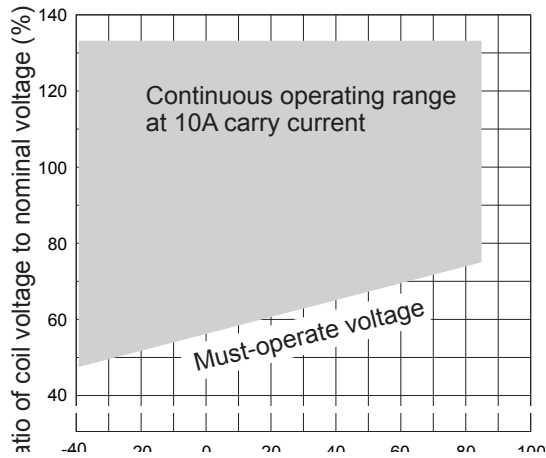
2. MAXIMUM BREAK CAPACITY



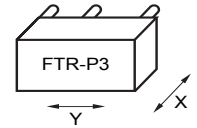
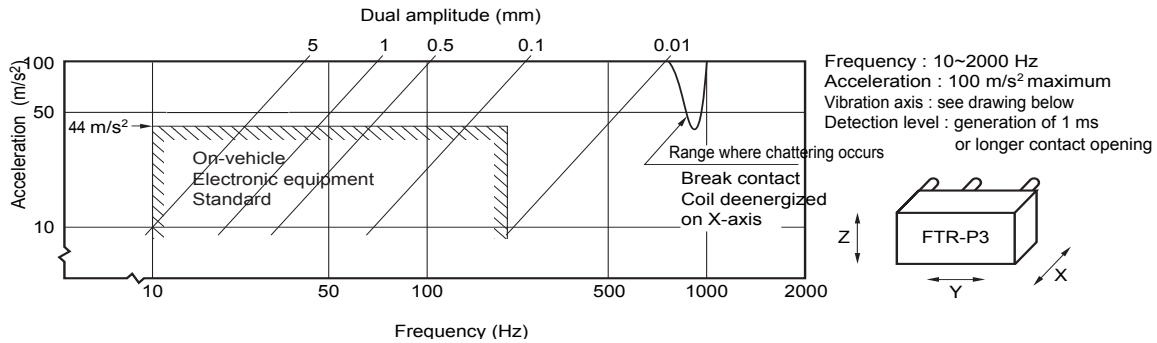
3. COIL TEMPERATURE RISE



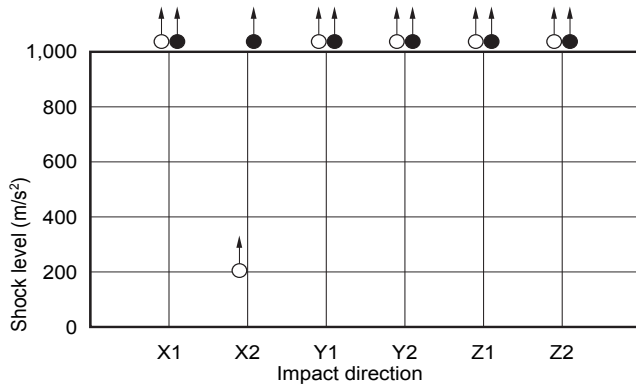
4. OPERATING COIL VOLTAGE RANGE



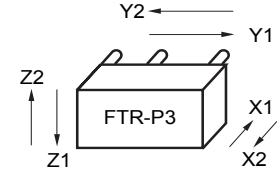
5. VIBRATION RESISTANCE CHARACTERISTIC



6. SHOCK RESISTANCE CHARACTERISTIC

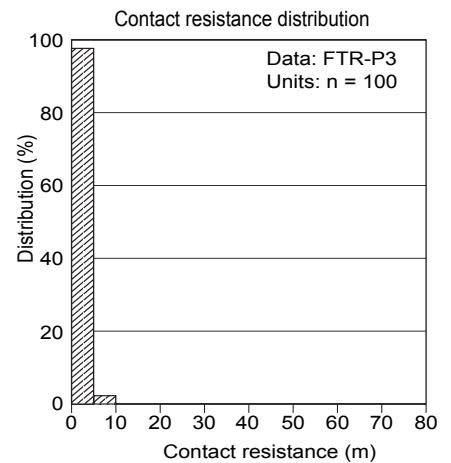
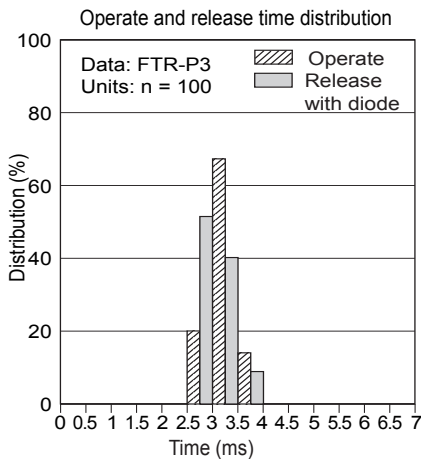
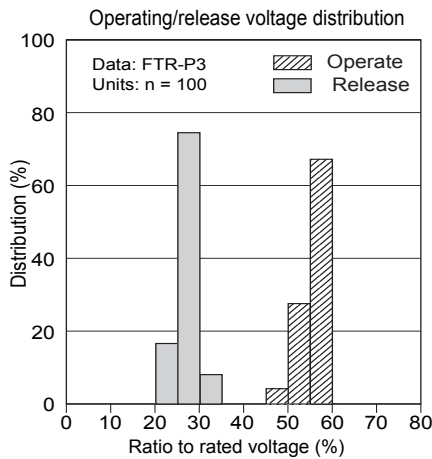


Shock duration : 111 ms, half-sine wave
 Test condition: coil, energized and de-energized
 Impact direction: see drawing below
 Detection level : generation of 1ms or longer contact opening



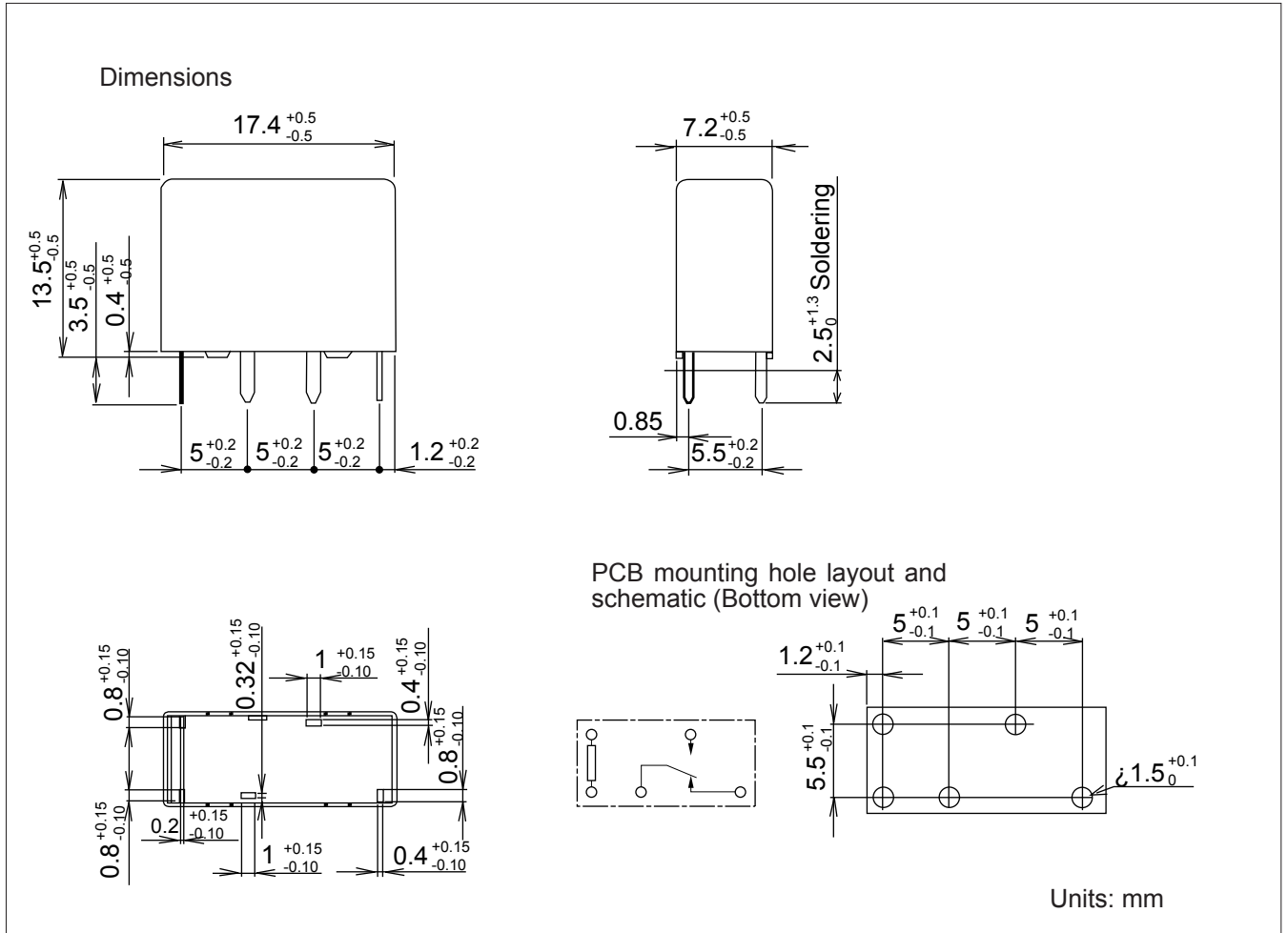
- : Break contact (coil de-energized)
- : Make contact (coil energized)

■ REFERENCE DATA



FTR-P3 SERIES

■ DIMENSIONS AND SCHEMATICS



■ PRECAUTIONS

Please refer to the Engineering Reference in our relay databook for general precautions.

RoHS Compliance and Lead Free Relay Information

1. General Information

- Relays produced after the specific date code that is indicated on each data sheet are lead-free now. Most of our signal and power relays are lead-free. Please refer to Lead-Free Status Info. (<http://www.fujitsu.com/us/downloads/MICRO/fcai/relays/lead-free-letter.pdf>)
- Lead free solder paste currently used in relays is Sn-3.0Ag-0.5Cu.
- All signal and most power relays also comply with RoHS. Please refer to individual data sheets. Relays that are RoHS compliant do not contain the 5 hazardous materials that are restricted by RoHS directive (lead, mercury, chromium IV, PBB, PBDE).
- It has been verified that using lead-free relays in leaded assembly process will not cause any problems (compatible).
- "LF" is marked on each outer and inner carton. (No marking on individual relays).
- To avoid leaded relays (for lead-free sample, etc.) please consult with area sales office.
- We will ship leaded relays as long as the leaded relay inventory exists.

Note: Cadmium was exempted from RoHS on October 21, 2005. (Amendment to Directive 2002/95/EC)

2. Recommended Lead Free Solder Profile

- Recommended solder paste Sn-3.0Ag-0.5Cu.

Reflow Solder condition

Flow Solder condition:

Pre-heating: maximum 120°C
Soldering: dip within 5 sec. at
260°C solder bath

Solder by Soldering Iron:

Soldering Iron
Temperature: maximum 360°C
Duration: maximum 3 sec.

We highly recommend that you confirm your actual solder conditions

3. Moisture Sensitivity

- Moisture Sensitivity Level standard is not applicable to electromechanical relays.

4. Tin Whisker

- Dipped SnAgCu solder is known as low risk tin whisker. No considerable length whisker was found by our in house test.

Fujitsu Components International Headquarter Offices

Japan

Fujitsu Component Limited
Gotanda-Chuo Building
3-5, Higashigotanda 2-chome, Shinagawa-ku
Tokyo 141 8630, Japan
Tel: (81-3) 5449-7010
Fax: (81-3) 5449-2626
Email: promothq@fcl.fujitsu.com
Web: www.fcl.fujitsu.com

North and South America

Fujitsu Components America, Inc.
250 E. Caribbean Drive
Sunnyvale, CA 94089 U.S.A.
Tel: (1-408) 745-4900
Fax: (1-408) 745-4970
Email: components@us.fujitsu.com
Web: <http://www.fujitsu.com/us/services/edevices/components/>

Europe

Fujitsu Components Europe B.V.
Diamantlaan 25
2132 WV Hoofddorp
Netherlands
Tel: (31-23) 5560910
Fax: (31-23) 5560950
Email: info@fceu.fujitsu.com
Web: emea.fujitsu.com/components/

Asia Pacific

Fujitsu Components Asia Ltd.
102E Pasir Panjang Road
#01-01 Citilink Warehouse Complex
Singapore 118529
Tel: (65) 6375-8560
Fax: (65) 6273-3021
Email: fcal@fcal.fujitsu.com
Web: <http://www.fujitsu.com/sg/services/micro/components/>

©2006 Fujitsu Components America, Inc. All rights reserved. All trademarks or registered trademarks are the property of their respective owners.

Fujitsu Components America or its affiliates do not warrant that the content of datasheet is error free. In a continuing effort to improve our products Fujitsu Components America, Inc. or its affiliates reserve the right to change specifications/datasheets without prior notice.
Rev. July 26/2006